

CONSTRUCTION:

- 14 gage hot-rolled steel to withstand +/- 10" WG.
- SSPC-SP3 power-tool cleaned, epoxy primed and exterior finish coat of medium-dark brown paint
- Large access door to bag filter compartment.
- Dust drawer (tray) for dust collection.
- Inlet/outlet; round collar for slip connection, rectangular are flanged.
- High inlet leads to large drop out section where the air makes a 90deg turn into the filter section. This prevents abrasion and forces most of the dust to drop directly to the dust drawer.
- Low cost bottom load filter bags and cages.

FILTERS:

- Standard bag filters are 4.5 inch diameter by 48 inch long "High-Ratio" style.
- LC30L8 uses 4.5" diam. by 96" long bag filters.
- 96" long bags are available, as an option, on all models.
- Standard bag filters are 16 oz. singed or glazed polyester-felt.
- Other bag materials are available to meet any specific application.

ELECTRICAL:

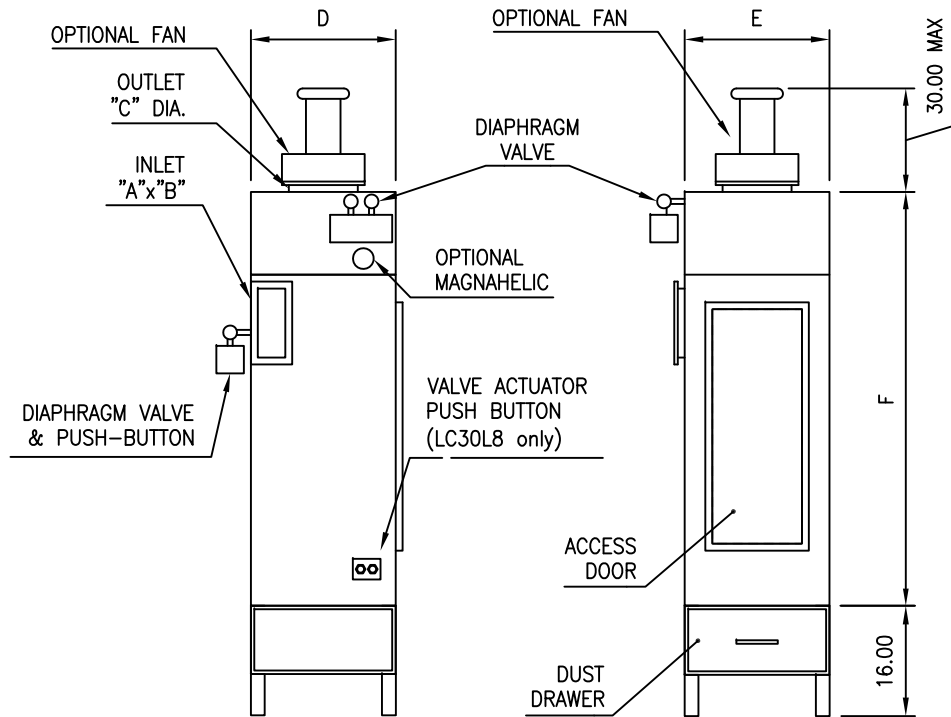
1.5 HP; 115/1/60 (standard) or 208-230-460-575/3/60 volts
 2 -10 HP 208-230-460-575/3/60 Volts

CLEANING OF FILTERS:

- Manual push-button on each diaphragm valve, allows compressed air to backflush the bag filters.
- Uses diaphragm valves rated at 125% of required compressed airflow to provide proper backflush flow.
- Compressed air is supplied at 85 psi.

OPTIONS:

- (1) **HOPPER & DRUM MODELS**, see drawing LC-002
- (2) **TOP MOUNT BLOWER**
- (3) **Outlet silencer** on blower, 10dba sound reduction
- (4) **Magnehelic gauge**
- (5) **Automatic cleaning** with timer controller
- (6) **96" long bags** for severe or PTFE membrane applications
- (7) **Explosion vent**; 20:1 ratio





MODEL #	LC6L	LC9L	LC12L	LC18L	LC30L	LC30L8
Rated CFM	500	720	960	1440	2400	4800
No. of Bags	6	9	12	18	30	30
No. of Valves	2	3	3	3	5	5
Compressed Air SCF per pulse	0.65	0.65	0.87	0.87	1.31	2.44
NOISE dBA(1)	88	87	87	91	82	88
Weight, lbs (2&3)	480	590	850	1150	1900	2700
INLET "A"x"B"	5 dia.	8x5	12x5	15x5	30x5	35x8
OUTLET "C"	6	8	8	10	12	16
D	21	27	27	27	39	39
E	21	21	27	39	39	39
F (4)	60	60	60	60	60	111
Dust Drawer Capacity Cu.Ft.	2.5	3	4	6	8.5	8.5
Motor HP (option)	1.5	2	3	5	5	10

- (1) Rated at 5 feet from fan outlet.
- (2) Add weight of fan; (LC6-18) 150- 170 Lbs, (LC30& 30-8) 220-300 Lbs.
- (3) For **shipping weight**, multiply by 1.40.
- (4) 111 inches for 8-foot bag option.

FAN PERFORMANCE (option)

CFM @ In. WC external pressure	0	1	2	4	6
LC6L	590	550	500	440	310
LC9L	785	750	720	640	540
LC12L	1050	990	960	800	690
LC18L	1510	1450	1440	1260	1110
LC30L	2510	2480	2400	2050	1600
LC30L8	5200	5000	4800	4400	4100

Quality Air Management reserves the right to change design and specifications without notice.

DRAWINGS BY:  Dave Palladini DLP Drafting 519-841-9500 dpalla1077@rogers.com	COMPANY: QUALITY AIR MANAGEMENT 240 Camille Crescent, Waterloo, Ontario - phone: 1-800-267-5585 www.qamanager.com	ALL DIMENSIONS ARE IN INCHES UNLESS STATED OTHERWISE			PROJECTION: 		
			TITLE: ULTRA FLOW "LC" SERIES - Low Profile	PAGE: 1 of 1	DATE: Jan. 11, '10	SCALE: NOT TO SCALE	REV. No.