

CV406, CV412 & CV418 SPECIFICATIONS

**CONSTRUCTION:** 12 gauge HRS, SSPC-SP3 power-tool cleaned, epoxy primed and exterior finish coat of medium-dark brown paint, access cover to filters, pyramidal hopper and long legs, automatic pulse-jet cleaning of filters. Dirty air enters a high, side inlet to a large distribution/dropout chamber where heavy and/or impulsive dust loads drop directly to the hopper. The air then makes a 90deg turn and enters the filter chamber where up to 99% of the remaining dust is filtered. The air leaving the outlet is clean enough to be recirculated back to the work area.

**SELF-CLEANING:** New advanced technology high efficiency pulse jet system cleans up to 100% of media, entirely on-line, allowing for **less filters, less cleaning frequency** and **HEPA type filtration**. Diaphragm valves and pulse-pipes are sized to 125% of required compressed air delivery. Only 1/3 of the cartridges are pulsed at once to prevent blowback in the system.

**AIRFLOW**(recommended for most applications): CV406= 4200 scfm, CV412= 8400 scfm, CV418= 12,600 scfm.

**INLET & OUTLET:** CV406= 15 x 20, CV412= 16 x 35, CV418= 18 x 30 ("A" x "B")

**FILTERS:** vertically mounted FLO-MAX cartridge filters, 8" x 39", washable synthetic media, low pressure drop, non-bridging, non-pinching design. CV406 has six(6) filters, CV412 has twelve(12) filters, CV418 has eighteen(18) filters.

**WEIGHT:** CV406= 2100 lbs, CV412= 4200 lbs, CV418= 6300 lbs

**ELECTRICAL:** 120 VAC, 1.2 W for timer controller.

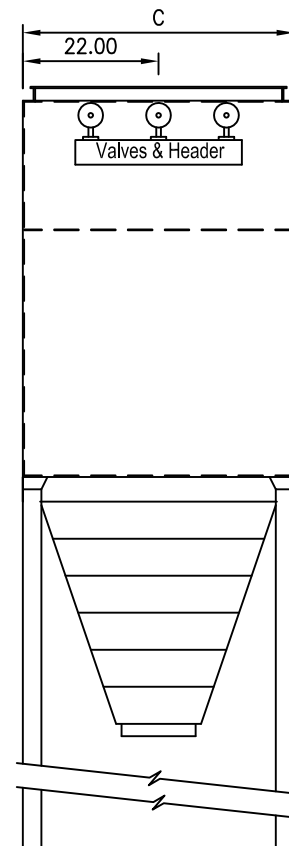
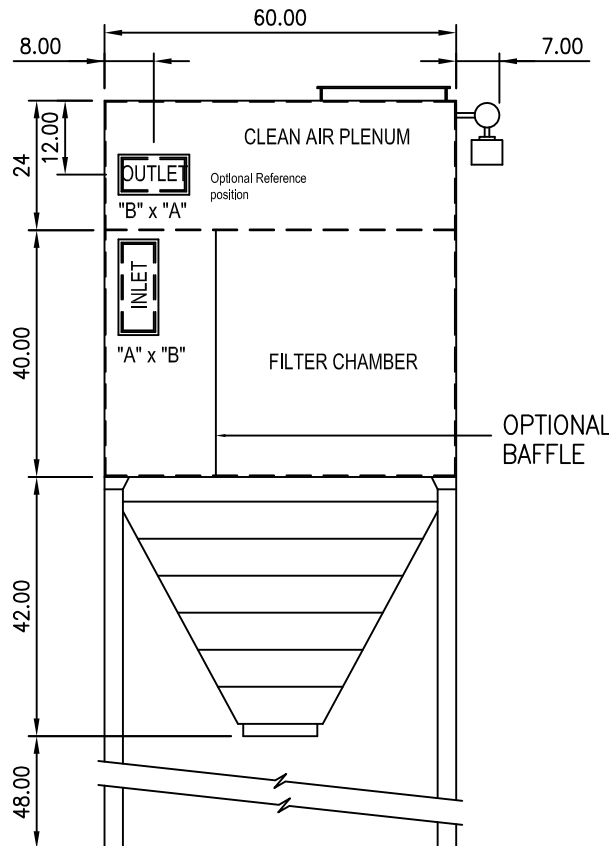
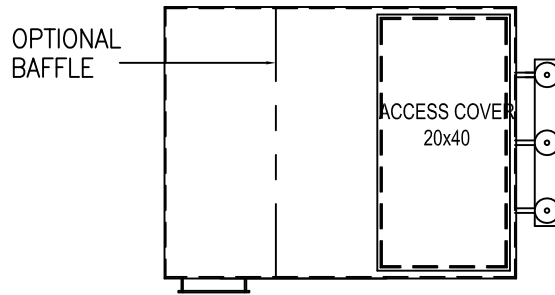
**Built to ISO 9001:2000 & CWB standards**

	CV406	CV412	CV418
"C" dimension	44	88	132
No. of Hoppers	1	2	3
Air (scfm) Consumption	1.72	3.43	5.15

OPTIONS

- Outlet can be placed on any side except the side for valves & Header.
- Remote floor-mount blower
- Silencer on outlet of blower
- Hydro/Oleiophobic cartridge media. Other special application medias, such as PTFE (GoreTex) are available.
- On-demand cleaning control.
- Magnehelic gauge for reading filter condition.
- Perforated baffle between inlet and filter chambers for special and/or abrasive applications.
- Pre-coat feeder system for wet and oily dusts.
- Other special precautions for difficult applications

For your safety;  
jobs should be submitted to  
QAM engineering review.



**All dimensions in inches.**

Proprietary Information; subject to change without notice.

DRAWINGS BY: 705.876.0053	COMPANY: QUALITY AIR MANAGEMENT 240 Camille Crescent, Waterloo, Ontario - phone: 1-800-267-5585 fax: 1-866-899-8954 www.qamanage.com	ALL DIMENSIONS ARE IN INCHES UNLESS STATED OTHERWISE	PAGE: 1 OF 1	DATE: 09/30/08	SCALE: NOT TO SCALE	PROJECTION: 
						DWG.No. CV-003
TITLE: CV Series DUST COLLECTOR						REV. No. REV. DATE. REVISION DESCRIPTION.