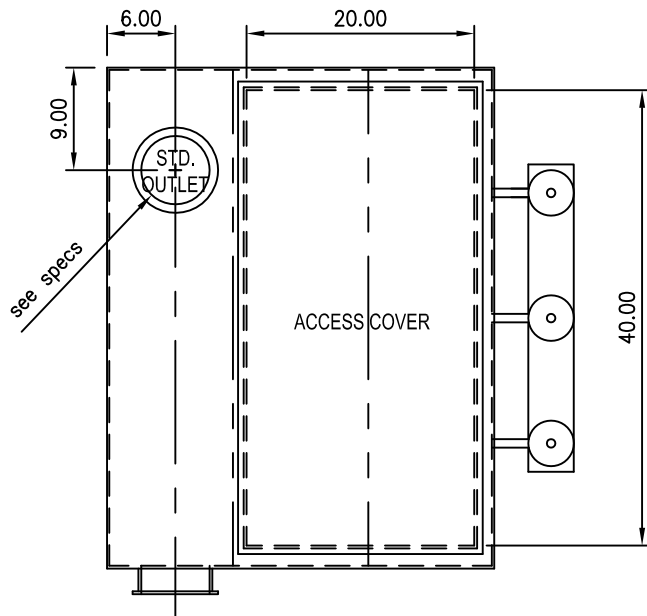


CV103 & CV106 SPECIFICATIONS



**CONSTRUCTION:** 12 gauge HRS, SSPC-SP3 power-tool cleaned, epoxy primed and exterior finish coat of medium-dark brown paint, access cover to filters, two aluminum dust drawers, automatic pulse-jet cleaning of filters. Air enters a high side inlet into a large distribution/dropout chamber where heavy and/or impulsive dust loads drop directly to the drawer or hopper. Air then enters the filter chamber where up to 99% of the remaining dust is filtered. Air leaving the outlet is clean enough to be recirculated back to the work area.

**SELF-CLEANING:** New advanced technology high efficiency pulse jet system cleans up to 100% of media, entirely on-line, allowing for **less filters, less cleaning frequency and HEPA type filtration.** Diaphragm valves and pulse-pipes are sized for 125% of compressed air delivery required. Only 1/3 of cartridges are pulsed at once to prevent blowback in the system.

**AIRFLOW**(recommended for most applications): CV103= 450 scfm, CV106= 900 scfm.

**INLET & OUTLET COLLAR:** CV103= 5.88"dia, CV106= 7.88"dia

**FILTERS:** vertically mounted FLO-MAX cartridge filters, 8" x 10", washable synthetic media, low pressure drop, non-bridging, non-pinching design. CV103 has three(3) filters, CV106 has six(6) filters.

**WEIGHT:** CV103= 500 lbs, CV106= 575lbs

**TOP-MOUNT BLOWER(Optional):** adds 60 lbs and 20" height

**ELECTRICAL:** CV103= 1 HP, 208-230/460/575 volt, 3.3/1.5/1.1 amps

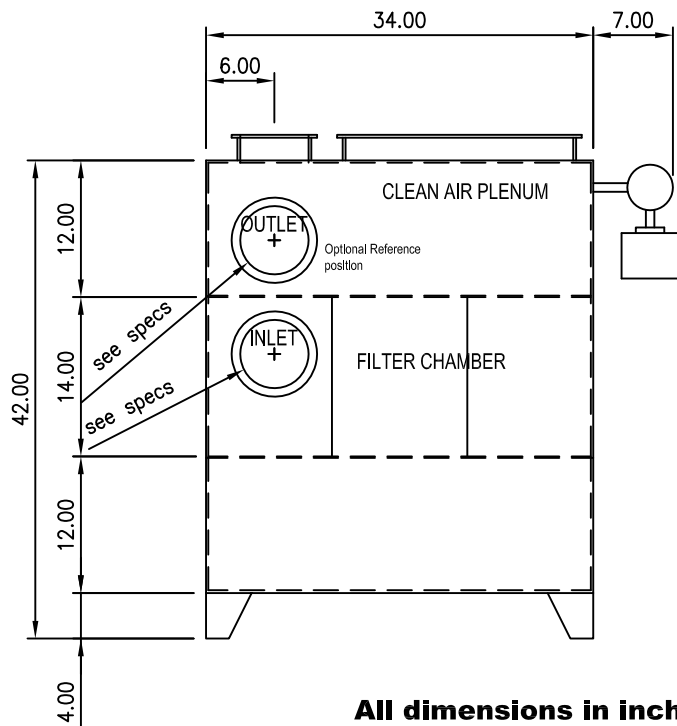
CV106= 3 HP, 208-230/460/575 volt, 8.8/3.9/3.2 amps

120 VAC, 1.2 W for timer controller.

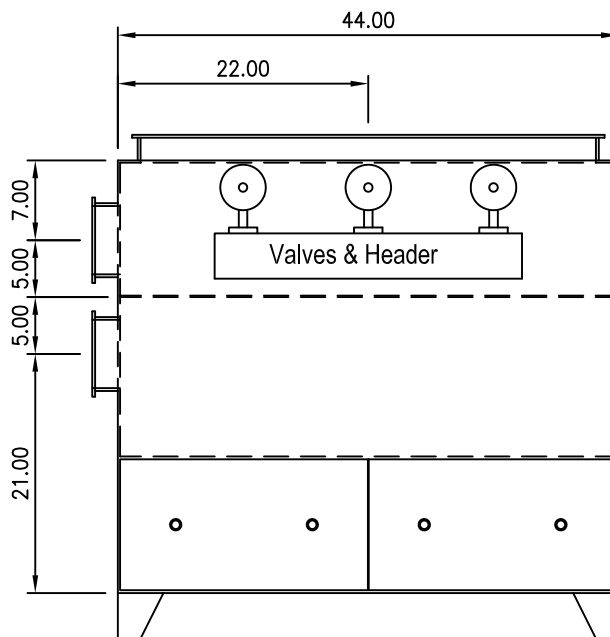
**NOISE LEVEL:** 70-83 dBA

**AIR CONSUMPTION** (scfm @ 2 grains): CV-103 = 0.026scfm, CV-106 = 0.051scfm

**Build to ISO 9001:2000 & CWB standards**



**All dimensions in inches.**



Fan Performance	0	2	4	6	" wg External
CV103	509	450	380	280	
CV106	1083	960	830	700	
SCFM (standard cubic feet per minute)					

**OPTIONS**

- Outlet can be placed on any side except the side for valves & Header.
- Top-mount blower
- Silencer on outlet of fan
- Pyramidal hopper and long legs.
- Hydro/Oleophobic cartridge media. Other special application medias, such as PTFE (Goretex) are available.
- On-demand cleaning control.
- Magnehelic gauge for reading filter condition.
- Perforated baffle between inlet and filter chambers for special and/or abrasive applications.
- Pre-coat feeder system for wet and oily dusts.
- Other special precautions for difficult applications

For your safety;  
jobs should be submitted to  
QAM engineering review.

Proprietary Information; subject to change without notice.

DRAWINGS BY:	COMPANY:	QUALITY AIR MANAGEMENT			ALL DIMENSIONS ARE IN INCHES UNLESS STATED OTHERWISE	PROJECTION: 			
		240 Camille Crescent, Waterloo, Ontario - phone: 1-800-267-5585 fax: 1-866-899-8954 www.qamanage.com							
TITLE:	CV Series DUST COLLECTOR	PAGE:	1 OF 1	DATE:	09/30/08	SCALE:	NOT TO SCALE		
705.876.0053						REV. No.	REV. DATE.	REVISION DESCRIPTION.	DWG.No. CV-001