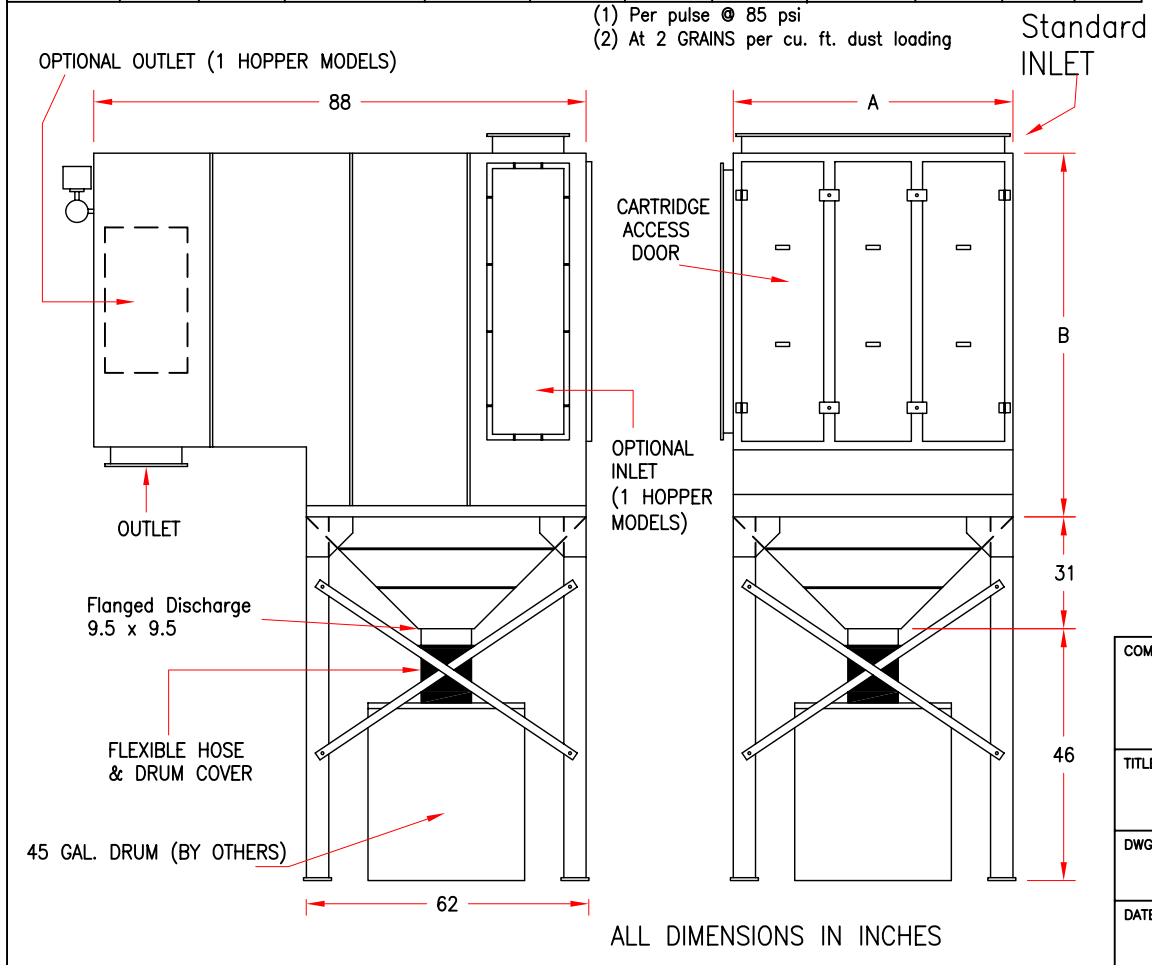


MODEL	RATED CFM	No. OF INLET & OUTLET	INLET & OUTLET SIZE	HOPPERS	FILTERS	VALVES	AIR CONSUMPTION		WIEGHT lbs.	A INCHES	B INCHES
							SCF (1)	SCFM (2)			
CS-24-2	24,000	4	16 x 26	4	24	12	3.92	6.80	10800	256	46
CS-27-3	27,000	3	16 x 40	3	27	9	5.88	7.60	9300	192	66
CS-30-2	30,000	5	16 x 26	5	30	15	3.92	8.40	13500	320	46

- 12 gauge painted steel
- Access door to filter compartment
- Pyramidal hopper for dust collection
- Primary Filter: high efficiency flame retardant cartridges, 80/20 blend media for stability and wear resistance. The filters are designed specifically for "high-ratio" dust collectors with special features to allow operation at eight times higher filter ratio and extend the life by 2-7 times over conventional designs.
- Optional filters: Polyester spunbond, true anti-static treated media, "ULTRA-3D" special membrane high permeability media for oil-smoke applications, and many other medias selected for any difficult application.

FILTER CLEANING:

- Automatic self-cleaning advanced technology "high-ratio" reverse jet pulse. Designed to clean thoroughly and ENTIRELY ON-LINE, requiring no shutdown for after-pulse cleaning.
- Automatic sequencer is operated strictly on demand from a photohelic pressure switch. The system is computer designed to use 40% less compressed air, while optimizing the cleaning pulse to provide maximum cleaning flow and even distribution over the entire filter media surface. This is essential for 100% complete cleaning and producing a stable well developed filter cake.
- Backflush: Uses valves rated at 125% of required flow to ensure proper back-flush volume.



QAM reserves the right to change design and specifications without notice.

COMPANY:		QUALITY AIR MANAGEMENT CORP.	
TITLE:		ULTRA-FLOW "CS" Series dust collector	
DWG.No.	CS-001-2	REV. No.	3
DATE:	6-15-04	SCALE:	NOT TO SCALE
		DATE:	9/22/05
		DRAWN BY:	GRB